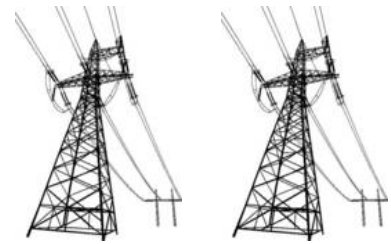


RESIDENTIAL

Safety Around Power Lines



PECO's Safety Six -- A Guide to Safety Around Power Lines

6

PECO has developed the following **six** safety tips as a reminder for you to be aware of the owner lines where you live and work.

Electricity can be dangerous if not properly used. Following these safety guidelines. They will help to protect you, your family, and your employees.

- Always assume power lines are live. This applies to power lines on utility poles as well as those entering your home or buildings. Even momentary contact can injure or kill. Always keep yourself, your equipment and anything you carry at least 10 feet from power lines. Even though you may notice a covering on a line, NEVER assume it is safe to touch. Stay Away, Stay Alive.
- Never stand ladders near power lines. When working on or near ladders, keep all tools, the ladder, and anything you carry well away (at least 10 feet) from power lines.
- Keep all cranes, scaffolding and high reach equipment away from power lines. Contact with a power line can cause serious burns or electrocution. Remember to work a safe distance from all power lines. When performing construction activities, keep equipment at least 10 feet from power lines and 25 feet from transmission tower lines.
- Keep yourself and others away from any fallen power lines. You never know when they might be live. Call PECO at 1-800-841-4141 right away and report the location of the downed wires. If a line falls on your car, stay in your car. If you must get out of the car, jump clear, do not touch any part of your car and the ground at the same time and stay clear of the fallen line.
- Do not climb or trim trees near power lines. Keep children from climbing trees near power lines. Hire a qualified contractor to trim trees near power lines. If you have any questions about removing limbs or trees near power lines, call PECO at 1-800-841-4141
- You are required by law to call Pennsylvania One Call at 811 before you dig. They will help you to locate gas, electric and telephone lines. Whether you are planting a tree, building a fence or laying foundation, contacting a line with a shovel or pick can damage power lines - and injure or kill.

If you are conducting any work or activity that may bring yourself, your equipment and anything you carry within ten feet of a power line, call PECO 1-800-841-4141. For more information regarding location of underground utility lines in your neighborhood or work area, call Pennsylvania One Call at 800-242-1776.

You must notify PECO before working within 10 feet of overhead lines. Contact your local [Contractor & Builder Services](#) organization. OSHA General Industry Standards Section 1910.333, Selection and Use of Work Practices, Sub-section (c) (3), Overhead Lines, states: If work is to be performed near overhead lines, the lines shall be de-energized and grounded, or other protective measures shall be provided before work is started. If protective measures, such as guarding, isolating, or insulating are provided, these precautions shall prevent employees from contacting such lines directly with any part of their body or indirectly through conductive materials, tools, or equipment.

There are many safety hazards that contractors, construction workers and anyone who works or digs around overhead or underground utilities are confronted with on a daily basis. These hazards can be avoided by applying simple safety principles. Visit our *Contractor Beware* Portal at www.culverco.com/pecocontractor for additional online safety information as well as free safety materials that you can order for each of your employees.